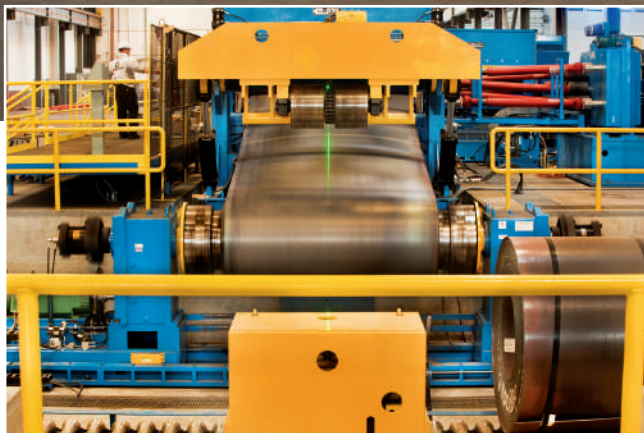
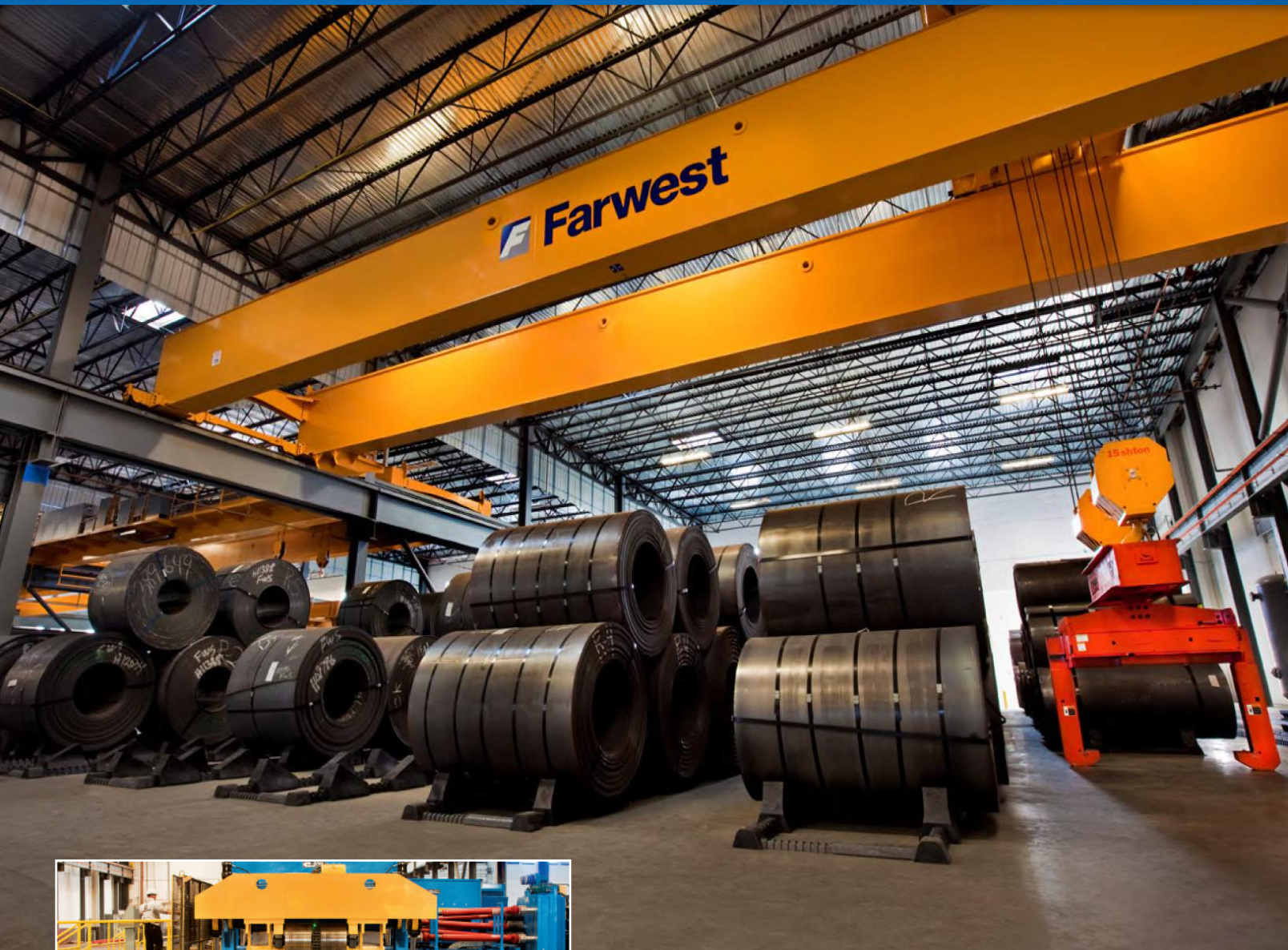


Cut to Length



Farwest is now leveling 14ga to 1/2" thick material in widths up to 96" wide.

Whether you're looking for laser finish quality, square sheets, or custom lengths to minimize waste, Farwest is ready to deliver.

Featuring Bradbury's latest leveling technology on the West Coast boasting the eDrive system, Farwest has the capability to minimize the internal stresses of leveled material to provide flatter plate and sheet than conventional roller levelers.

 **Farwest**
Steel Corporation

STANDARDS

Maximum Coil Size	25 tons
Width Range	36" x 96"
Length Range	48" x 650"
Length Tolerance	-0 + 1/2"
Square Tolerance	1/4"
Maximum Length Change Per Coil	Up to 5 lengths
Stencil	Grade, Size, Heat
Grade Range	
	<ul style="list-style-type: none">• ASTM A36• ASTM A572 GR 50• ASTM A656 GR 80• Domex 100• ASTM A1011• Floor Plate• Pickled & Oil



Visit www.farweststeel.com for product, service & location information



BOISE, IDAHO

(208) 336-2410
Toll Free (800) 632-5951
Fax (208) 344-0145
Steel.Boise.Sales@farweststeel.com

MEDFORD, OREGON

(541) 779-6620
Toll Free (800) 547-9652
Fax (541) 772-4763
Steel.Medford.Sales@farweststeel.com

RENTON, WASHINGTON

(425) 251-6300
Toll Free (800) 548-6623
Fax (425) 251-6333
Steel.Renton.Sales@farweststeel.com

EUGENE, OREGON

(541) 686-2000
Toll Free (800) 452-5091
Fax (541) 681-7250
Steel.Eugene.Sales@farweststeel.com

VANCOUVER, WASHINGTON

(360) 619-4760
Toll Free (855) 246-5052
Steel.Vancouver.Sales@farweststeel.com

STOCKTON, CALIFORNIA

(209) 235-4659
Toll Free (866) 706-5404
Fax (209) 235-4758
Steel.Stockton.Sales@farweststeel.com